

Sector: Industrial

Robertson business:
Robertson Civil Engineering

Client: Scottish Enterprise

Value: £1.1m

Contract dates: March 2015—July 2015

Location: Methil, Fife



Energy Park Fife, Methil Docks

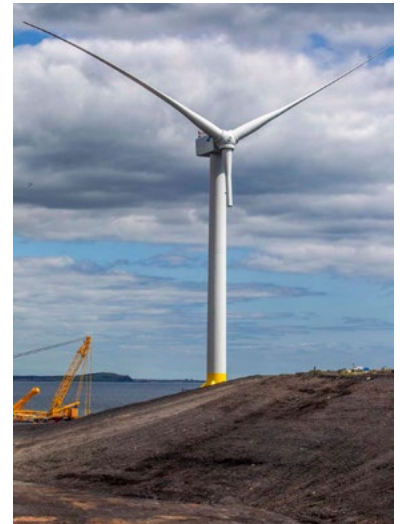
Developing a world-leading engineering zone

Energy Park Fife is a joint venture between Scottish Enterprise and Fife Council. It encompasses a 55ha engineering site, Methil Docks and the Low Carbon Investment Park. The docks provide deep water port facilities, enabling close access to Scotland's oil and gas fields and the major offshore wind sites.

We constructed a 16ha structural platform to develop the site. The works included a balanced cut and fill earthworks programme with approximately 150,000m³ of structural fill, as well as filter drainage, security fencing, sub-station demolition, landscaping of non-structural embankment and remedial work to coastal protection.

Given the previous uses of the site, and following soil investigation, there was potential for asbestos and benzo pyrene contamination, so continuous monitoring was carried out to ensure the safety of our operatives.

The site is now ready to support a large renewable sector business coming to Energy Park Fife.




ROBERTSON
robertson.co.uk

FURTHER INFORMATION: www.robertson.co.uk/project/energy-park-fife-methil-docks